

National Safety Standards for Invasive Procedures Webinar

The Patient Safety Learning Perspective

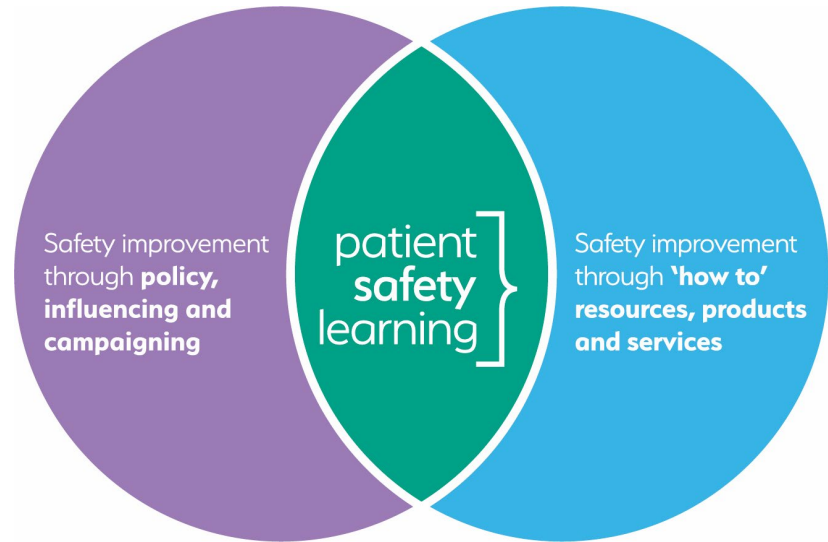
Helen Hughes, Chief Executive of Patient Safety Learning

Wednesday 10 July 2023



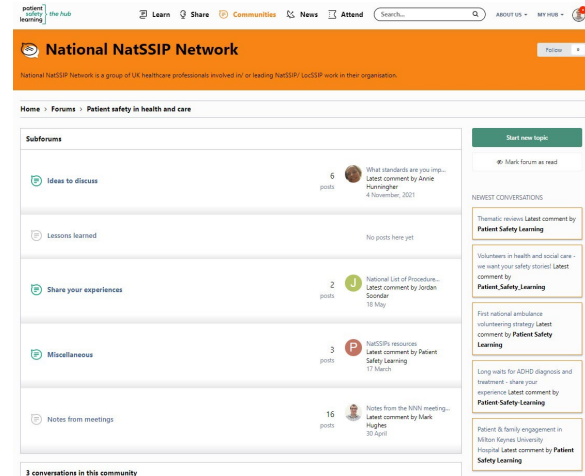
An independent charity for patient safety

- Founded 2018 as a voice for system-wide change
- Vision: to help create a world where patients are free from avoidable harm
- Mission & Purpose: to transform how health and social care organisations think and act in regard to patient safety



NatSSIPs 2: an essential resource for patient safety

- NatSSIPs: a system and standards approach to patient safety
- National NatSIPPs Network
 - Hosted on [the hub](#)
 - Forum for sharing good practice
 - Supporting learning
 - Creating ‘how to’ resources
 - Inspiring culture and behavioural change
 - Cross organisational collaboration
 - Peer support in overcoming barriers



The screenshot shows the 'National NatSSIP Network' forum page. The page title is 'National NatSSIP Network' and the subtitle is 'National NatSSIP Network is a group of UK healthcare professionals involved in/ or leading NatSSIP/ LocalSSIP work in their organisation'. The page is part of 'the Hub' and includes navigation links for 'Learn', 'Share', 'Communities', 'News', and 'Attend'. The main content area is titled 'Patient safety in health and care' and lists several subforums: 'Ideas to discuss' (6 posts), 'Lessons learned' (No posts here yet), 'Share your experiences' (2 posts), 'Miscellaneous' (3 posts), and 'Notes from meetings' (16 posts). The right sidebar features a 'Start new topic' button, a 'Mark forum as read' button, and a 'NEWEST CONVERSATIONS' section with several discussion topics and their latest comments.

Patient Safety Management Network (PSMN)

- An informal voluntary network, created by and for patient safety professionals, established in June 2021.
- Hosts weekly drop-in sessions for its members, with guest speakers joining to talk through patient safety issues of importance.
- Opportunity for members to gain new insights and learning, access a point of peer support and have a safe space for discussion.



How to join networks on *the hub*

- When you initially register and put in your details, on the 'Join a private group' section please tick 'National NatSSIPs Network' and/or 'Patient Safety Management Network' to be automatically added.
- Already signed up to *hub*? Email mark@patientsafetylearning.org to be added to either or both the National NatSSIPs Network and Patient Safety Management Network.

Join a private group (if appropriate) Patient Safety Management Network (For UK hub members in a health or care service provider organisation who have an active patient safety role). Members consent to receive PSMN-related emails and invitations.

National NatSSIP Network (a group of UK healthcare professionals involved in/ or leading NatSSIP/ LocSSIP work in their organisation.) Members consent to receiving group- related emails and invitations.

Patient Safety Partner Network (For UK hub members in a health or care service provider organisation who volunteer officially as a Patient Safety Partner). Members consent to receive PSPN-related emails and invitations.

or All / None

You can only join one of these private groups if you are an appropriate candidate for membership. All applications will be checked.

Type of organisation * This information is not publicly visible

Current role type * This information is not publicly visible

Designation * This information is not publicly visible

the hub (www.pslhub.org)

- Promoting the voice of the 'patient safety front line'
- Sharing knowledge for learning and action through our free patient safety platform
- Publishing and promoting high quality content that can be shared to improve patient safety
- Promoting patient safety good practice and policy

The screenshot shows the homepage of the Patient Safety Learning Hub. At the top, there is a navigation bar with the logo 'patient safety learning the hub' on the left, and links for 'Learn', 'Share', 'Communities', 'News', and 'Attend' in the center. A search bar and 'ABOUT US', 'Sign in', and 'Sign Up' links are on the right. The main content area features a welcome message: 'Welcome to the hub. An award-winning platform to share learning for patient safety'. Below this is a call to action: 'Engage with content, network with members and be the first to receive exclusive news and invitations'. A section titled 'Join the hub today to enjoy its benefits' includes icons and links for 'Learn', 'Share', 'Communities', 'News', and 'All content'. The page is divided into four columns of content:

- Latest in Learn:** Search our content rich library for resources, tools, videos and much more.
- Latest in News:** Keep up to date with the latest patient safety news.
- Latest in Communities:** Join our communities to start discussions and make new contacts.
- Latest in Blogs:** Read our patient safety stories.

Below these columns are several article teasers:

- Infographic: How to spot wellbeing red flags among your colleagues** (Published 19 hours ago)
- Learning from Preventable Deaths (submission to Health and Social Care Committee's Prevention Inquiry, Richards et al.)** (Published 20 hours ago)
- Patient survey: Halfloop medical device app** (Published 21 hours ago)
- Cancer patients diagnosed in pandemic less likely to survive** (Published 49 minutes ago)
- 'Smart bandages' could improve outcomes for patients with non-healing wounds** (Published 3 hours ago)
- Inadequate maternity unit handed safety warning** (Published 3 hours ago)
- Complaints to Australian medical regulator about telehealth rise by 413% over three years** (Published 3 hours ago)
- Volunteers in health and social care - we want your safety stories!** (Posted 23 May)
- Patient safety research collaboration** (Posted 20 May)
- Long waits for ADHD diagnosis and treatment - share your experience** (Posted 17 May)
- Pain during IUD fitting** (Posted 12 May)

At the bottom right, there is a section titled 'We want to hear from you' with a call to action: 'Are you passionate about improving patient safety? Would you like to share your insights in an article or blog? Anyone who has an interest or involvement in health or social care can write a blog for the hub, including:'